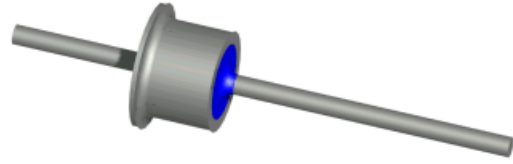
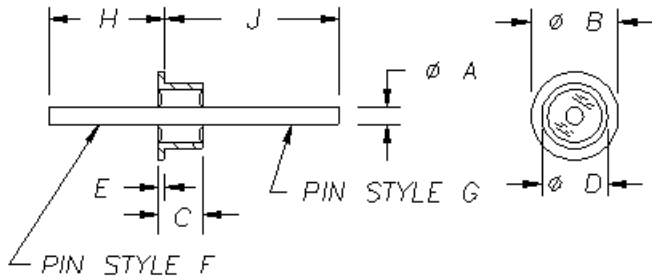


Feedthru Terminals

Sinclair FT0000 Series

Outline

Image



Notes:

- Flangeless eyelets, "H" & "J" are from end of eyelet.
- Parts subject to revision without notice.
- Call Sinclair to verify design, inventory counts and pricing.
- \$750 minimum order.

Details

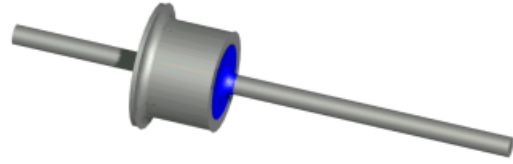
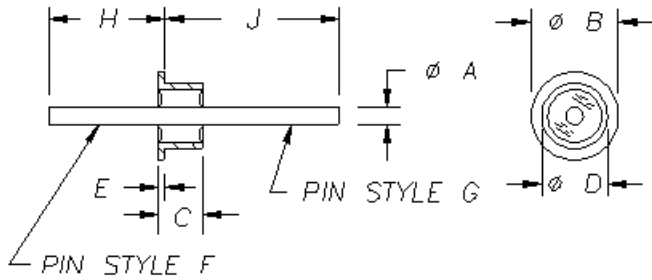
Part Number	File No.	A	B	C	D	E	F	G	H	J	Seal Type
SW068-055-009-1	FT-0463	.009	.068	.055	.068	NONE	SW	SW	.026	.084	50 OHM
NH050-034-012-1	FT-0490	.012	.050	.034	.050	NONE	NH	SW	.033	.077	MATCHED
NH050-040-012-1	FT-0470	.012	.050	.040	.050	NONE	NH	SW	.030	.080	MATCHED
SW076-034-012-1	FT-0491	.012	.076	.034	.076	NONE	SW	SW	.028	.062	50 OHM
SW076-040-012-1	FT-0471	.012	.076	.040	.076	NONE	SW	SW	.025	.065	50 OHM
SW076-055-012-5	FT-0642	.012	.077	.055	.012	NONE	SW	SW	.128	.095	50 OHM
SW077-055-012-6	FT-0575	.012	.077	.055	.077	NONE	SW	SW	.017	.133	50 OHM
SW077-055-012-1	FT-0221	.012	.077	.055	.077	NONE	SW	SW	.029	.096	50 OHM
SW076-055-012-3	FT-0600	.012	.077	.055	.077	NONE	SW	SW	.035	.125	50 OHM
SW076-055-012-2	FT-0591	.012	.077	.055	.077	NONE	SW	SW	.040	.135	50 OHM
SW076-055-012-4	FT-0629	.012	.077	.055	.077	NONE	SW	SW	.044	.114	50 OHM
SW077-055-012-4	FT-0493	.012	.077	.055	.077	NONE	SW	SW	.047	.103	50 OHM
SW077-055-012-2	FT-0455	.012	.077	.055	.077	NONE	SW	SW	.079	.206	50 OHM
SW077-055-012-3	FT-0456	.012	.077	.055	.077	NONE	SW	SW	.079	.154	50 OHM
SW077-055-012-5	FT-0567	.012	.077	.055	.077	NONE	SW	SW	.197	.188	50 OHM
SW086-055-012-1	FT-0477	.012	.086	.055	.086	NONE	SW	SW	.029	.096	50 OHM
SW086-055-012-2	FT-0553	.012	.086	.055	.086	NONE	SW	SW	.029	.096	50 OHM
SW086-095-012-1	FT-0462	.012	.086	.095	.086	NONE	SW	SW	.049	.136	50 OHM
SW098-062-012-1	FT-0130	.012	.098	.062	.098	NONE	SW	SW	.070	.242	MATCHED
SW099-062-012-1	FT-0641	.012	.098	.062	.098	NONE	SW	SW	.102	.134	MATCHED
NH050-040-015-1	FT-0558	.015	.050	.040	.050	NONE	NH	SW	.030	.150	MATCHED
SW098-062-015-12	FT-0628	.015	.098	.055	.098	NONE	FL	SW	.055	.124	50 OHM
SW098-055-015-1	FT-0627	.015	.098	.055	.098	NONE	FL	SW	.107	.117	50 OHM
SW098-062-015-5	FT-0611	.015	.098	.062	.098	NONE	SW	SW	.025	.112	50 OHM
SW098-062-015-11	FT-0622	.015	.098	.062	.098	NONE	SW	SW	.045	.112	MATCHED
SW098-062-015-1	FT-0494	.015	.098	.062	.098	NONE	SW	SW	.050	.187	50 OHM
SW098-062-015-6	FT-0612	.015	.098	.062	.098	NONE	SW	SW	.050	.202	50 OHM
SW098-062-015-2	FT-0511	.015	.098	.062	.098	NONE	SW	SW	.062	.142	50 OHM
SW098-062-015-4	FT-0598	.015	.098	.062	.098	NONE	SW	SW	.069	.112	50 OHM
SW098-062-015-3	FT-0563	.015	.098	.062	.098	NONE	SW	SW	.092	.135	50 OHM
SW098-062-015-7	FT-0615	.015	.098	.062	.098	NONE	SW	SW	.125	.112	50 OHM
SW098-062-015-9	FT-0619	.015	.098	.062	.098	NONE	SW	SW	.181	.114	50 OHM
SW098-062-015-10	FT-0620	.015	.098	.062	.098	NONE	SW	SW	.224	.114	50 OHM
SW098-062-015-8	FT-0618	.015	.098	.062	.098	NONE	SW	SW	.300	.114	50 OHM
FL098-062-016-1	FT-0472	.016	.098	.062	.098	NONE	FL	SW	.134	.113	50 OHM
FL098-062-016-2	FT-0481	.016	.098	.062	.098	NONE	FL	SW	.134	.113	50 OHM
NH050-040-018-1	FT-0557	.018	.050	.040	.050	NONE	NH	SW	.050	.290	MATCHED
SW050-040-018-1	FT-0632	.018	.050	.040	.050	NONE	SW	SW	.027	.067	MATCHED
SW050-060-018-1	FT-0604	.018	.050	.060	.050	NONE	SW	SW	.050	.110	MATCHED
SW059-040-018-1	FT-0586	.018	.059	.040	.059	NONE	SW	SW	.059	.106	MATCHED

Feedthru Terminals

Sinclair FT0000 Series

Outline

Image



Notes:

- Flangeless eyelets, "H" & "J" are from end of eyelet.
- Parts subject to revision without notice.
- Call Sinclair to verify design, inventory counts and pricing.
- \$750 minimum order.

Details

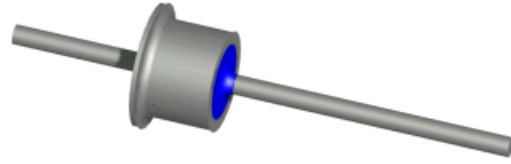
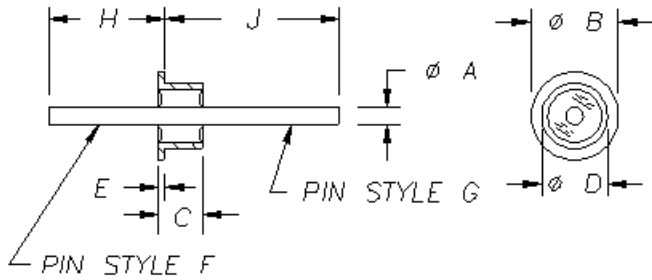
Part Number	File No.	A	B	C	D	E	F	G	H	J	Seal Type
SW059-040-018-2	FT-0626	.018	.059	.040	.059	NONE	SW	SW	.059	.081	MATCHED
SW059-048-018-2	FT-0565	.018	.059	.048	.059	NONE	SW	SW	.040	.088	MATCHED
SW059-048-018-1	FT-0486	.018	.059	.048	.059	NONE	SW	SW	.047	.106	MATCHED
SW065-040-018-1	FT-0523	.018	.065	.040	.065	NONE	SW	SW	.050	.120	MATCHED
NH065-076-018-1	FT-0508	.018	.065	.076	.065	NONE	NH	SW	.019	.311	COMP.
NH065-076-018-2	FT-0510	.018	.065	.076	.065	NONE	NH	SW	.035	.250	COMP.
NH065-076-018-3	FT-0537	.018	.065	.076	.065	NONE	NH	SW	.035	.500	COMP.
SW082-050-018-2	FT-0026	.018	.082	.050	.068	.013	SW	SW	.195	.418	COMP.
SW082-050-018-1	FT-0025	.018	.082	.050	.068	.013	SW	SW	.218	.242	COMP.
SW086-060-018-1	FT-0478	.018	.086	.060	.086	NONE	SW	SW	.049	.136	MATCHED
FL072-040-020	FT-0644	.020	.072	.040	.072	NONE	FL	SW	.055	.175	MATCHED
FL074-045-020-1	FT-0453	.020	.074	.045	.064	.010	FL	SW	.360	.095	MATCHED
FL075-055-020-2	FT-0649	.020	.075	.055	.075	NONE	FL	SW	.109	.136	MATCHED
SW075-055-020-1	FT-0648	.020	.075	.055	.075	NONE	SW	SW	.110	.135	MATCHED
SW075-069-020-1	FT-0054	.020	.075	.069	.063	.025	RA	SW	.100	.085	MATCHED
SW076-040-020-1	FT-0449	.020	.076	.040	.076	NONE	SW	SW	.070	.240	COMP.
SW076-055-020-1	FT-0585	.020	.077	.055	.077	NONE	SW	SW	.058	.217	MATCHED
FL085-050-020-1	FT-0483	.020	.085	.050	.070	.010	SW	FL	.140	.100	MATCHED
FL085-053-020-2	FT-0484	.020	.085	.053	.072	.010	SW	FL	.140	.100	MATCHED
SW085-070-020-1	FT-0576	.020	.085	.070	.085	NONE	SW	SW	.080	.130	MATCHED
FL098-062-020-1	FT-0482	.020	.098	.062	.098	NONE	FL	SW	.135	.197	MATCHED
FL075-045-025-1	FT-0631	.025	.075	.045	.075	NONE	FL	SW	.119	.126	MATCHED
SW075-045-025-2	FT-0520	.025	.075	.045	.075	NONE	SW	SW	.070	.175	MATCHED
SW075-045-025-1	FT-0488	.025	.075	.045	.075	NONE	SW	SW	.075	.170	MATCHED
SW075-045-025-3	FT-0573	.025	.075	.045	.075	NONE	SW	SW	.086	.159	MATCHED
SW075-045-025-5	FT-0584	.025	.075	.045	.075	NONE	SW	SW	.153	.147	MATCHED
SW075-045-025-4	FT-0583	.025	.075	.045	.075	NONE	SW	SW	.203	.147	MATCHED
FL075-055-025-2	FT-0650	.025	.075	.055	.075	NONE	FL	SW	.109	.136	MATCHED
SW075-055-025-1	FT-0589	.025	.075	.055	.075	NONE	SW	SW	.086	.159	MATCHED
SW076-040-025-2	FT-0579	.025	.076	.040	.076	NONE	SW	SW	.028	.140	MATCHED
SW076-040-025-1	FT-0571	.025	.076	.040	.076	NONE	SW	SW	.065	.140	MATCHED
SW076-055-025-2	FT-0522	.025	.076	.055	.076	NONE	SW	SW	.100	.205	MATCHED
SW076-055-025-1	FT-0512	.025	.076	.055	.076	NONE	SW	SW	.190	.330	MATCHED
SW076-069-025-1	FT-0223	.025	.076	.069	.076	NONE	SW	SW	.120	.549	MATCHED
SW082-050-025-3	FT-0222	.025	.082	.050	.067	.013	SW	SW	.040	.140	MATCHED
SW082-050-025-1	FT-0226	.025	.082	.050	.067	.013	SW	SW	.045	.075	MATCHED
SW082-050-025-6	FT-0405	.025	.082	.050	.067	.013	SW	SW	.165	.195	MATCHED
SW082-050-025-2	FT-0048	.025	.082	.050	.067	.013	SW	SW	.166	.194	MATCHED
SW082-050-025-4	FT-0340	.025	.082	.050	.067	.013	SW	SW	.210	2.040	COMP.
SW082-050-025-7	FT-0469	.025	.082	.050	.067	.013	SW	SW	.242	.078	MATCHED

Feedthru Terminals

Sinclair FT0100 Series

Outline

Image



Notes:

- Flangeless eyelets, "H" & "J" are from end of eyelet.
- Parts subject to revision without notice.
- Call Sinclair to verify design, inventory counts and pricing.
- \$750 minimum order.

Details

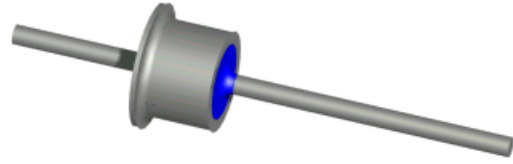
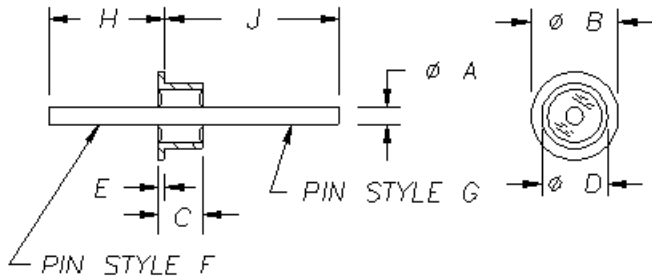
Part Number	File No.	A	B	C	D	E	F	G	H	J	Seal Type
FL110-062-016-1	FT-0544	.016	.110	.062	.110	NONE	FL	SW	.134	.113	50 OHM
SW110-060-018-4	FT-0577	.018	.110	.060	.110	NONE	SW	SW	.050	.120	50 OHM
SW110-060-018-3	FT-0566	.018	.110	.060	.110	NONE	SW	SW	.065	.195	50 OHM
SW110-060-018-1	FT-0530	.018	.110	.060	.110	NONE	SW	SW	.072	.240	50 OHM
SW110-060-018-2	FT-0536	.018	.110	.060	.110	NONE	SW	SW	.072	.178	50 OHM
SW110-060-018-13	FT-0645	.018	.110	.060	.110	NONE	SW	SW	.126	.134	50 OHM
SW110-060-018-7	FT-0607	.018	.110	.060	.110	NONE	SW	SW	.205	.140	50 OHM
SW110-060-018-12	FT-0637	.018	.110	.060	.110	NONE	SW	SW	.228	.125	50 OHM
SW110-060-018-14	FT-0646	.018	.110	.060	.110	NONE	SW	SW	.235	.135	50 OHM
SW110-060-018-11	FT-0636	.018	.110	.060	.110	NONE	SW	SW	.253	.127	50 OHM
SW110-060-018-15	FT-0647	.018	.110	.060	.110	NONE	SW	SW	.285	.134	50 OHM
SW110-060-018-8	FT-0613	.018	.110	.060	.110	NONE	SW	SW	.323	.140	50 OHM
SW110-060-018-9	FT-0614	.018	.110	.060	.110	NONE	SW	SW	.329	.114	50 OHM
SW110-060-018-6	FT-0606	.018	.110	.060	.110	NONE	SW	SW	.370	.130	50 OHM
SW110-060-018-10	FT-0617	.018	.110	.060	.110	NONE	SW	SW	.430	.141	50 OHM
SW110-060-018-5	FT-0595	.018	.110	.060	.110	NONE	SW	SW	.439	.141	50 OHM
SW117-062-018-3	FT-0592	.018	.117	.063	.085	.007	SW	SW	.278	.123	COMP.
SW117-062-018-1	FT-0237	.018	.117	.063	.085	.009	SW	SW	.219	.175	COMP.
SW117-062-018-2	FT-0238	.018	.117	.063	.085	.009	SW	SW	.219	.531	COMP.
SW118-060-018-1	FT-0546	.018	.118	.060	.118	NONE	SW	SW	.072	.240	50 OHM
SW120-023-018-1	FT-0278	.018	.120	.023	.085	.007	SW	SW	.219	.531	MATCHED
SW121-220-018-1	FT-0602	.018	.122	.220	.122	NONE	SW	SW	.030	.255	50 OHM
FP125-078-018-1	FT-0283	.018	.125	.078	.093	.015	SW	FP	.281	.469	COMP.
FL110-062-020-1	FT-0545	.020	.110	.062	.110	NONE	FL	SW	.135	.197	MATCHED
SW145-150-020-1	FT-0450	.020	.145	.150	.145	NONE	SW	SW	.075	.300	MATCHED
FL160-062-020-1	FT-0547	.020	.160	.062	.110	.025	SW	FL	.160	.172	MATCHED
SW172-062-020-1	FT-0217	.020	.172	.062	.172	NONE	SW	SW	.115	.177	COMP.
NH100-058-025-1	FT-0417	.025	.100	.093	.100	NONE	NH	SW	.058	.492	COMP.
SW110-063-025-1	FT-0514	.025	.110	.063	.110	NONE	SW	SW	.101	.164	MATCHED
SW105-055-030-2	FT-0229	.030	.105	.055	.090	.010	SW	SW	.213	.162	COMP.
SW105-055-030-1	FT-0225	.030	.105	.055	.090	.010	SW	SW	.275	.740	COMP.
SW105-055-030-3	FT-0338	.030	.105	.055	.091	.015	SW	SW	.250	.187	COMP.
DFP105-055-030-2	FT-0112	.030	.105	.055	.092	.006	FP	FP	.270	.200	COMP.
DFP105-055-030-1	FT-0111	.030	.105	.055	.092	.015	FP	FP	.270	.200	COMP.
LOFP105-055-030-1	FT-0174	.030	.105	.055	.092	.015	LO	FP	.130	.270	COMP.
LOFP105-055-030-2	FT-0175	.030	.105	.055	.092	.015	LO	FP	.250	.200	COMP.
FP105-055-030-1	FT-0135	.030	.105	.055	.092	.015	SW	FP	.150	.170	COMP.
FP105-055-030-2	FT-0136	.030	.105	.055	.092	.015	SW	FP	.230	.270	COMP.
SWSO105-055-030-1	FT-0212	.030	.105	.055	.092	.015	SW	SO	.250	NONE	COMP.
FP106-055-030-1	FT-0145	.030	.106	.055	.092	.011	SW	FP	.148	.169	COMP.

Feedthru Terminals

Sinclair FT0100 Series

Outline

Image



Notes:

- Flangeless eyelets, "H" & "J" are from end of eyelet.
- Parts subject to revision without notice.
- Call Sinclair to verify design, inventory counts and pricing.
- \$750 minimum order.

Details

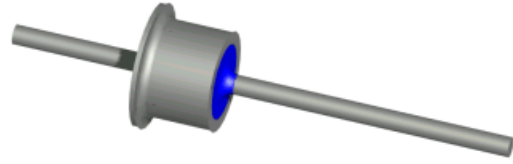
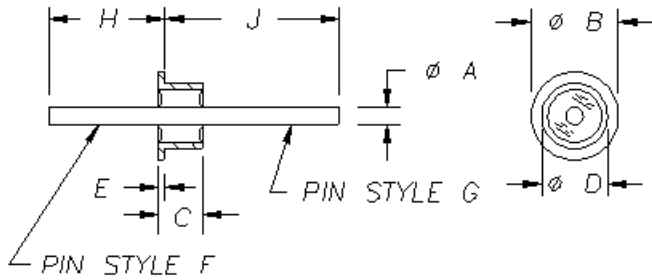
Part Number	File No.	A	B	C	D	E	F	G	H	J	Seal Type
FP106-055-030-2	FT-0146	.030	.106	.055	.092	.011	SW	FP	.148	.169	COMP.
SW106-055-030-1	FT-0250	.030	.106	.055	.092	.011	SW	SW	.145	.685	COMP.
SW125-093-030-1	FT-0434	.030	.125	.093	.102	.030	SW	SW	.152	.583	COMP.
SW125-094-030-1	FT-0253	.030	.125	.093	.102	.030	SW	SW	.620	.320	COMP.
SW128-110-030-1	FT-0599	.030	.128	.110	.128	NONE	SW	SW	.090	.375	COMP.
SWRA133-075-030-1	FT-0345	.030	.133	.075	.112	.014	SW	RA	.580	.120/1.293	COMP.
SW133-075-030-1	FT-0248	.030	.133	.075	.112	.015	SW	SW	.187	.625	COMP.
SW133-075-030-2	FT-0252	.030	.133	.075	.112	.015	SW	SW	.255	.630	COMP.
SW133-075-030-3	FT-0341	.030	.133	.075	.112	.015	SW	SW	.281	.735	COMP.
SW133-075-030-5	FT-0022	.030	.133	.075	.112	.015	SW	SW	.375	.625	COMP.
SW133-075-030-4	FT-0344	.030	.133	.075	.112	.015	SW	SW	.375	1.437	COMP.
SW133-075-030-6	FT-0342	.030	.133	.075	.112	.015	SW	SW	.750	1.000	COMP.
SW133-075-030-7	FT-0343	.030	.133	.075	.112	.015	SW	SW	.755	1.005	COMP.
SW135-075-030-1	FT-0234	.030	.134	.075	.110	.019	SW	SW	.819	.181	GROUND
FP135-075-030-1	FT-0138	.030	.135	.075	.110	.012	SW	FP	.162	.188	COMP.
FP135-075-030-2	FT-0137	.030	.135	.075	.110	.012	SW	FP	1.012	.188	COMP.
SW135-075-030-2	FT-0249	.030	.135	.075	.112	.015	SW	SW	.202	.670	COMP.
SW135-075-030-3	FT-0251	.030	.135	.075	.112	.015	SW	SW	.202	.630	COMP.
SW144-100-030-1	FT-0213	.030	.144	.100	.144	NONE	SW	SW	.063	.617	COMP.
SW145-100-030-1	FT-0389	.030	.145	.100	.145	NONE	SW	SW	.063	.617	COMP.
SW150-050-030-1	FT-0214	.030	.150	.050	.125	.033	SW	SW	.418	.292	COMP.
SW150-070-030-1	FT-0257	.030	.150	.070	.125	.023	SW	SW	.248	.096	COMP.
SW155-075-030-1	FT-0273	.030	.155	.075	.133	.013	SW	SW	.203	.439	COMP.
FP155-075-030-1	FT-0150	.030	.155	.075	.134	.012	FP	SW	.160	.440	COMP.
FP155-082-030-1	FT-0142	.030	.155	.082	.134	.014	FP	SW	.160	.440	COMP.
SW158-110-030-1	FT-0014	.030	.158	.110	.130	.020	SW	SW	.284	.342	COMP.
SW159-070-018-1	FT-0337	.030	.159	.070	.159	NONE	SW	SW	.080	.282	COMP.
SW167-280-030-1	FT-0388	.030	.167	.280	.156	.030	SW	SW	.230	.500	COMP.
SW168-063-030-1	FT-0215	.030	.168	.062	.140	.052	SW	SW	.740	.510	COMP.
SW175-094-030-1	FT-0236	.030	.175	.094	.143	.030	SW	SW	.495	.693	COMP.
FP175-095-030-1	FT-0148	.030	.175	.095	.150	.018	FP	SW	.160	.340	COMP.
FP175-095-030-2	FT-0149	.030	.175	.095	.150	.018	FP	SW	.160	.440	COMP.
FP175-121-040-1	FT-0147	.030	.175	.121	.142	.030	FP	SW	.475	.687	COMP.
SW195-053-030-1	FT-0274	.030	.195	.051	.124	.015	SW	SW	.203	.531	COMP.
SW195-053-030-2	FT-0241	.030	.195	.051	.124	.015	SW	SW	1.000	1.000	COMP.
FL115-076-030-1	FT-0507	.030	N/A	.076	.115	N/A	FL	SW	.068	.256	COMP.
DSP100-060-030-1	FT-0052	.030;.017	.100	.060	.100	NONE	SP	SP	.028	.313	COMP.
FL106-080-036-1	FT-0461	.036	.106	.080	.106	NONE	FL	SW	.106	.326	MATCHED
SWRA112-063-040-1	FT-0285	.040	.112	.062	.112	NONE	SW	RA	.510	.185/1.288	COMP.
SW122-088-040-3	FT-0416	.040	.122	.093	.122	NONE	SW	SW	.088	.302	COMP.

Feedthru Terminals

Sinclair FT0100 Series

Outline

Image



Notes:

- Flangeless eyelets, "H" & "J" are from end of eyelet.
- Parts subject to revision without notice.
- Call Sinclair to verify design, inventory counts and pricing.
- \$750 minimum order.

Details

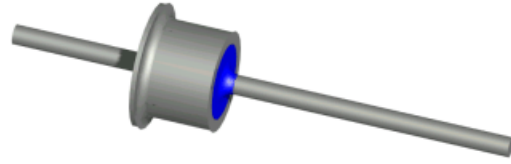
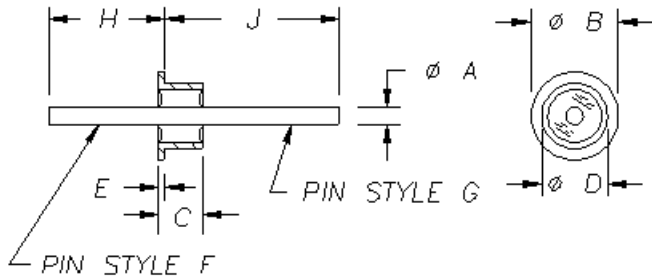
Part Number	File No.	A	B	C	D	E	F	G	H	J	Seal Type
SW122-173-040-3	FT-0415	.040	.122	.093	.122	NONE	SW	SW	.173	.302	COMP.
SW122-100-040-1	FT-0479	.040	.122	.100	.122	NONE	SW	SW	.045	.211	MATCHED
SW122-110-040-2	FT-0533	.040	.122	.110	.122	NONE	SW	SW	.034	.471	COMP.
SW122-110-040-3	FT-0534	.040	.122	.110	.122	NONE	SW	SW	.034	.471	COMP.
SW122-088-040-1	FT-0409	.040	.122	.110	.122	NONE	SW	SW	.088	.410	COMP.
SW122-088-040-2	FT-0413	.040	.122	.110	.122	NONE	SW	SW	.088	.302	COMP.
SW122-088-040-4	FT-0429	.040	.122	.110	.122	NONE	SW	SW	.088	.332	COMP.
SW122-088-040-5	FT-0437	.040	.122	.110	.122	NONE	SW	SW	.088	.332	COMP.
SW122-110-040-1	FT-0232	.040	.122	.110	.122	NONE	SW	SW	.110	.573	COMP.
SW122-173-040-1	FT-0410	.040	.122	.110	.122	NONE	SW	SW	.173	.510	COMP.
SW122-173-040-2	FT-0414	.040	.122	.110	.122	NONE	SW	SW	.173	.302	COMP.
SW122-173-040-4	FT-0428	.040	.122	.110	.122	NONE	SW	SW	.173	.332	COMP.
SW122-173-040-5	FT-0436	.040	.122	.110	.122	NONE	SW	SW	.173	.332	COMP.
DFP133-075-040-1	FT-0114	.040	.132	.075	.112	.015	FP	FP	.203	.234	COMP.
TH133-075-040-1	FT-0131	.040	.133	.075	.110	.025	TH	SW	.220	.200	MATCHED
SW133-073-040-1	FT-0240	.040	.133	.075	.112	.015	SW	SW	.100	.087	COMP.
SW133-075-040-3	FT-0254	.040	.133	.075	.112	.015	SW	SW	.100	.200	COMP.
SW133-075-040-5	FT-0265	.040	.133	.075	.112	.015	SW	SW	.250	.942	COMP.
SW133-075-040-4	FT-0271	.040	.133	.075	.112	.015	SW	SW	.250	.250	COMP.
SW133-075-040-6	FT-0264	.040	.133	.075	.112	.015	SW	SW	.270	.875	COMP.
SW133-075-040-1	FT-0262	.040	.133	.075	.112	.015	SW	SW	.375	.625	COMP.
SW133-075-040-2	FT-0269	.040	.133	.075	.112	.015	SW	SW	.750	1.000	COMP.
FP133-075-040-1	FT-0139	.040	.133	.075	.112	.017	SW	FP	.250	.281	COMP.
THSO135-075-040-1	FT-0128	.040	.135	.075	.110	.012	SO	TH	NONE	.250	COMP.
NH138-080-040-1	FT-0443	.040	.138	.080	.138	NONE	NH	SW	.058	.442	COMP.
DFP150-070-040-1	FT-0115	.040	.150	.070	.122	.022	FP	FP	.266	.218	COMP.
SW150-070-040-2	FT-0233	.040	.150	.070	.125	.023	SW	SW	.125	.875	COMP.
SW150-070-040-1	FT-0260	.040	.150	.070	.125	.023	SW	SW	.260	.120	COMP.
SW168-063-040-1	FT-0216	.040	.168	.062	.140	.052	SW	SW	.240	.260	COMP.
SW170-100-040-1	FT-0061	.040	.170	.100	.170	NONE	SW	SW	.060	.807	COMP.
LOFP176-093-040-1	FT-0176	.040	.175	.093	.145	.030	LO	FP	.250	.218	COMP.
SW176-093-040-1	FT-0218	.040	.175	.093	.145	.030	SW	SW	.250	.250	COMP.
SW175-094-040-1	FT-0268	.040	.175	.094	.143	.030	SW	SW	.240	1.470	COMP.
SW175-094-040-2	FT-0263	.040	.175	.094	.143	.030	SW	SW	.250	.870	COMP.
SW175-094-040-3	FT-0266	.040	.175	.094	.143	.030	SW	SW	.260	.990	COMP.
SW175-094-040-4	FT-0261	.040	.175	.094	.143	.030	SW	SW	.380	.620	COMP.
SW175-094-040-5	FT-0267	.040	.175	.094	.143	.030	SW	SW	.630	.870	COMP.
SWSO175-100-040-1	FT-0211	.040	.175	.100	.135	.018	SW	SO	.187	NONE	COMP.
TTSO175-100-040-1	FT-0334	.040	.175	.100	.137	.018	TT	SO	.281	NONE	COMP.
THFP175-100-040-1	FT-0324	.040	.175	.100	.137	.019	TH	FP	.234	.281	COMP.

Feedthru Terminals

Sinclair FT0100 Series

Outline

Image



Notes:

- Flangeless eyelets, "H" & "J" are from end of eyelet.
- Parts subject to revision without notice.
- Call Sinclair to verify design, inventory counts and pricing.
- \$750 minimum order.

Details

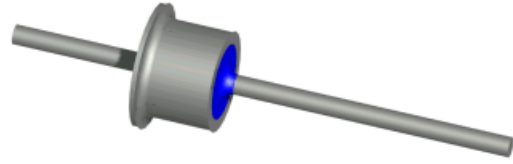
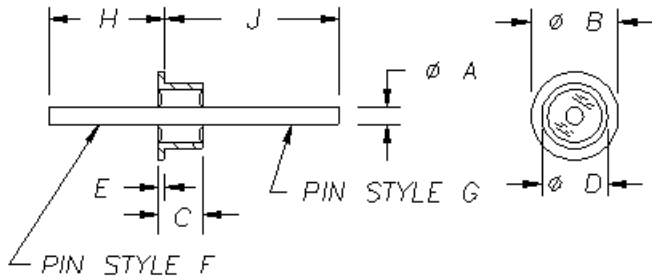
Part Number	File No.	A	B	C	D	E	F	G	H	J	Seal Type
TH175-100-040-1	FT-0329	.040	.175	.100	.137	.019	TH	SW	.234	.250	COMP.
LO195-053-040-1	FT-0432	.040	.195	.050	.124	.015	LO	SW	.281	.406	COMP.
LO195-053-040-2	FT-0433	.040	.195	.050	.124	.015	LO	SW	.281	.406	COMP.
DFP195-050-040-1	FT-0011	.040	.195	.050	.125	.015	FP	FP	11/64	15/64	COMP.
LOFP195-053-040-2	FT-0178	.040	.195	.050	.125	.015	LO	FP	.270	.210	COMP.
LOFP195-053-040-1	FT-0177	.040	.195	.050	.125	.015	LO	FP	.281	.218	COMP.
SW195-053-040-1	FT-0256	.040	.195	.051	.124	.015	SW	SW	.140	.196	COMP.
SW195-053-040-5	FT-0239	.040	.195	.051	.124	.015	SW	SW	.202	.630	COMP.
SW195-053-040-2	FT-0259	.040	.195	.051	.124	.015	SW	SW	.375	.625	COMP.
SW195-053-040-3	FT-0230	.040	.195	.051	.124	.015	SW	SW	.625	.375	COMP.
SW195-053-040-4	FT-0242	.040	.195	.051	.124	.015	SW	SW	1.000	1.000	COMP.
THFP195-053-040-1	FT-0325	.040	.195	.051	.124	.015	TH	FP	.234	.218	COMP.
TH195-053-040-1	FT-0330	.040	.195	.051	.124	.015	TH	SW	.234	.250	COMP.
FP195-053-040-1	FT-0143	.040	.195	.055	.125	.019	FP	SW	.172	.203	COMP.
FP195-053-040-2	FT-0144	.040	.195	.055	.125	.019	FP	SW	.203	.109	COMP.
DF197-055-040-1	FT-0107	.040	.197	.055	.125	.019	FL	FL	.172	.234	COMP.
SW197-055-040-1	FT-0279	.040	.197	.055	.128	.019	SW	SW	.625	.375	GROUND
TBDFP187-234-040-2	FT-0018	.040	3/16" HEX	.235	8-32	.094	FP	FP	.296	.297	COMP.
TBDFP187-234-040-1	FT-0029	.040	3/16" HEX	.235	8-32	.094	FP	FP	.296	.297	COMP.
TBDFP187-234-040-4	FT-0290	.040	3/16" HEX	.235	8-32	.094	FP	FP	.296	.750	COMP.
TBDFP187-234-040-3	FT-0291	.040	3/16" HEX	.235	8-32	.094	FP	FP	.296	.297	COMP.
HT132-056-040-1	FT-0158	.040/.030	.132	.056	.112	.014	HT	HT	.253	.042	COMP.
HT175-095-040-1	FT-0160	.041/.031	.175	.095	.150	.016	HT	HT	.254	.254	COMP.
FP152-095-050-4	FT-0425	.050	.152	.095	.152	NONE	FL	RA	.050	.267/.140	COMP.
FP152-095-050-5	FT-0426	.050	.152	.095	.152	NONE	FL	RA	.050	.267/.140	COMP.
FP152-095-050-6	FT-0427	.050	.152	.095	.152	NONE	FL	RA	.125	.267/.140	COMP.
FP170-100-050-1	FT-0141	.050	.171	.100	.171	NONE	FP	SW	.390	.155	COMP.
HT133-075-050-1	FT-0159	.050/.032	.133	.075	.112	.015	HT	HT	.115	.185	COMP.
FP152-095-040-2	FT-0424	.050;.040	.152	.095	.152	NONE	FL	SW	.060	1.085	COMP.
FP152-095-040-1	FT-0423	.050;.040	.152	.095	.152	NONE	FL	SW	.125	1.085	COMP.
HT195-053-055-1	FT-0156	.055/.032	.195	.050	.124	.015	HT	HT	.215	.040	COMP.
SW145-055-060-1	FT-0457	.060	.145	.055	.145	NONE	SW	SW	.120	.305	MATCHED
NH146-088-060-1	FT-0418	.060	.146	.088	.146	NONE	NH	SW	.045	.570	COMP.
NH146-088-060-2	FT-0444	.060	.146	.088	.146	NONE	NH	SW	.070	.343	COMP.
NH150-140-060-1	FT-0408	.060	.150	.140	.150	NONE	NH	SW	.070	.390	COMP.
FP152-095-050-3	FT-0422	.060;.050	.152	.095	.152	NONE	FL	SW	.060	1.085	COMP.
FP152-095-050-1	FT-0420	.060;.050	.152	.095	.152	NONE	FL	SW	.125	1.085	COMP.
FP152-095-050-2	FT-0421	.060;.050	.152	.095	.152	NONE	FL	SW	.125	1.085	COMP.
SW187-100-062-1	FT-0210	.062	.187	.100	.159	.016	SW	SW	.254	.256	COMP.

Feedthru Terminals

Sinclair FT0200 Series

Outline

Image



Notes:

- Flangeless eyelets, "H" & "J" are from end of eyelet.
- Parts subject to revision without notice.
- Call Sinclair to verify design, inventory counts and pricing.
- \$750 minimum order.

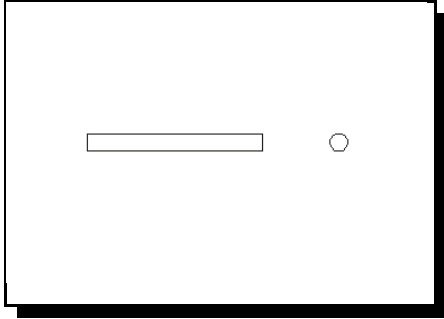
Details

Part Number	File No.	A	B	C	D	E	F	G	H	J	Seal Type
SW214-062-020-1	FT-0102	.020	.214	.062	.214	NONE	SW	SW	.143	.206	COMP.
FP228-093-030-1	FT-0134	.030	.228	.093	.198	.073	FP	SW	.230	.270	COMP.
SW250-375-030-1	FT-0506	.030 (2)	.250	.375	.250	NONE	SW	SW	.812	.938	COMP.
SW282-060-036-1	FT-0468	.036	.282	.060	.282	NONE	SW	SW	.080	.140	MATCHED
DLO195-053-040-1	FT-0126	.040	.195	.055	.125	.019	LO	LO	.281	.250	COMP.
DLO195-053-040-2	FT-0430	.040	.195	.055	.125	.019	LO	LO	.281	.250	COMP.
SW200-100-040-1	FT-0243	.040	.200	.100	.150	.035	SW	SW	.090	.120	COMP.
SW200-100-040-2	FT-0244	.040	.200	.100	.150	.035	SW	SW	.110	.125	COMP.
SW200-100-040-3	FT-0245	.040	.200	.100	.150	.035	SW	SW	.160	.100	COMP.
SW200-100-040-5	FT-0246	.040	.200	.100	.150	.035	SW	SW	.160	.120	COMP.
SW200-100-040-4	FT-0255	.040	.200	.100	.150	.035	SW	SW	.160	.175	COMP.
SW200-100-040-6	FT-0247	.040	.200	.100	.150	.035	SW	SW	.190	.100	COMP.
SW200-100-040-8	FT-0023	.040	.200	.100	.150	.035	SW	SW	.250	.470	COMP.
SW200-100-040-9	FT-0258	.040	.200	.100	.150	.035	SW	SW	.250	.120	COMP.
SW200-100-040-7	FT-0270	.040	.200	.100	.150	.035	SW	SW	.250	.200	COMP.
SW200-100-040-10	FT-0272	.040	.200	.100	.150	.035	SW	SW	.250	.250	COMP.
SW200-100-040-11	FT-0539	.040	.200	.100	.150	.035	SW	SW	.285	.215	COMP.
SW213-195-040-1	FT-0276	.040	.213	.195	.122	.013	SW	SW	.313	.537	COMP.
SW213-195-040-2	FT-0275	.040	.213	.195	.122	.013	SW	SW	.375	.445	COMP.
SW213-195-040-3	FT-0277	.040	.213	.195	.122	.013	SW	SW	.403	.577	COMP.
SW213-195-040-4	FT-0235	.040	.213	.195	.122	.013	SW	SW	.450	.537	COMP.
FP228-093-040-1	FT-0133	.040	.228	.093	.198	.073	FP	SW	.250	.156	COMP.
SW245-073-040-1	FT-0282	.040	.245	.073	.176	.016	SW	SW	.266	.854	COMP.
SW245-073-040-2	FT-0281	.040	.245	.073	.176	.016	SW	SW	.276	.834	COMP.
SW245-073-040-3	FT-0280	.040	.245	.073	.176	.016	SW	SW	.625	.375	COMP.
DLO245-073-040-1	FT-0127	.040	.245	.073	.176	.017	LO	LO	.281	.250	COMP.
LOFP245-073-040-1	FT-0179	.040	.245	.075	.176	.017	LO	FP	.281	.297	COMP.
TH245-073-040-1	FT-0400	.040	.245	.075	.176	.019	TH	SW	.220	.205	COMP.
SW250-125-040-1	FT-0231	.040	.250	.125	.200	.040	SW	SW	.165	.375	COMP.
THFP245-073-047-1	FT-0326	.047	.245	.073	.176	.016	TH	FP	.234	.297	COMP.
TTFP245-073-047-1	FT-0336	.047	.245	.073	.176	.016	TT	FP	.297	.297	COMP.
TH245-073-047-1	FT-0331	.047	.245	.075	.176	.019	TH	SW	.218	.250	COMP.
TTSO250-148-047-1	FT-0346	.047	.245	.148	.186	.016	SO	TT	NONE	.406	COMP.
HT245-073-060-1	FT-0161	.060/.040	.245	.075	.176	.017	HT	HT	.093	.093	COMP.
DFFP245-073-062-1	FT-0117	.062	.245	.073	.176	.017	FP	FP	.250	.297	COMP.
DFFP245-073-062-2	FT-0118	.062	.245	.073	.176	.017	FP	FP	.343	.375	COMP.
LOFP245-073-062-1	FT-0180	.062	.245	.075	.176	.017	LO	FP	.344	.437	COMP.
DFFP245-148-062-1	FT-0108	.062	.245	.148	.186	.019	FP	FP	.266	.437	COMP.
DFFP245-148-062-2	FT-0109	.062	.245	.148	.186	.019	FP	FP	.344	.437	COMP.
OLHT245-073-062-1	FT-0167	.062/.025	.245	.075	.176	.017	OL	HT	.109	.093	COMP.

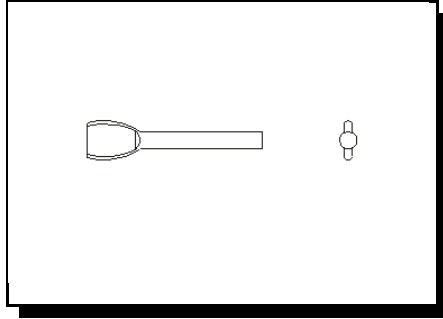
Feedthru Terminals

Pin End Types

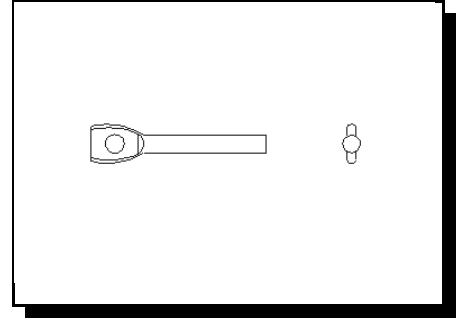
Straight Wire (SW)



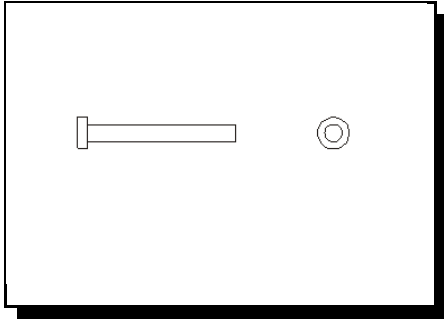
Flattened (FL)



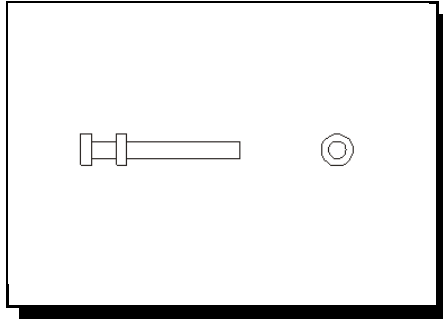
Flattened & Pierced (FP)



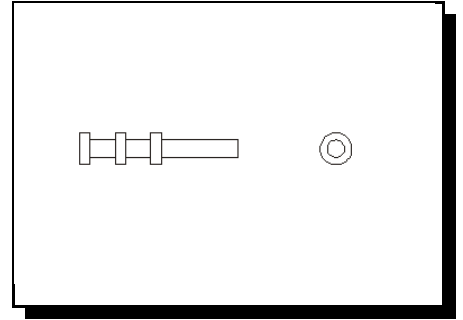
Nail Head (NH)



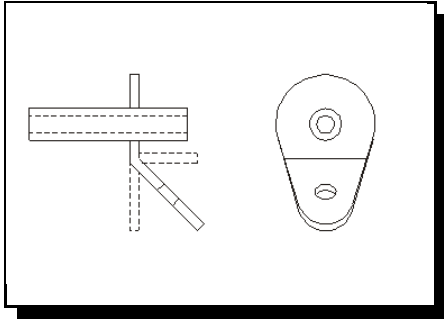
Turret Head (TH)



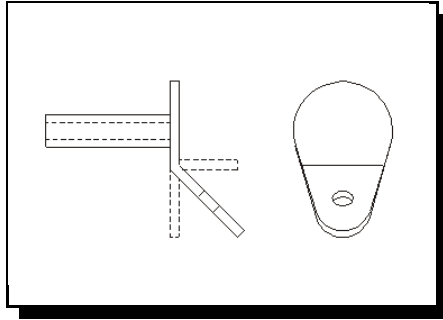
Triple Turret Head (TT)



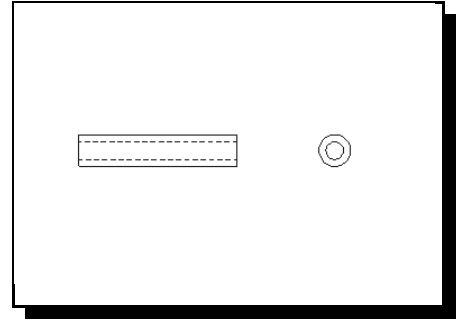
Open Lug (OL)



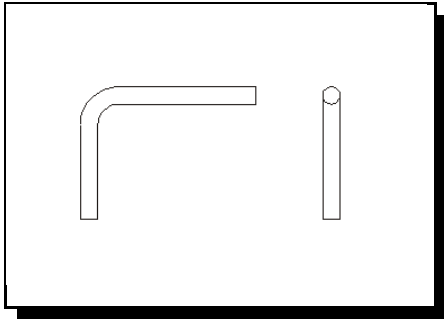
Blind Lug (BL)



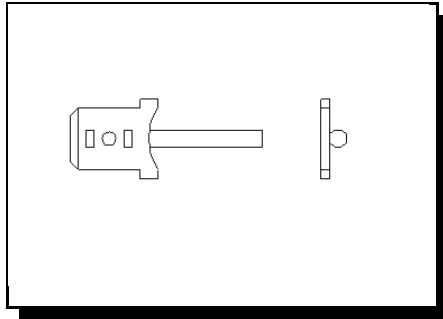
Hollow Tube (HT)



Right Angle / Bent (RA)



Mechanical Clip (MC)



Loop / Hook (LO)

